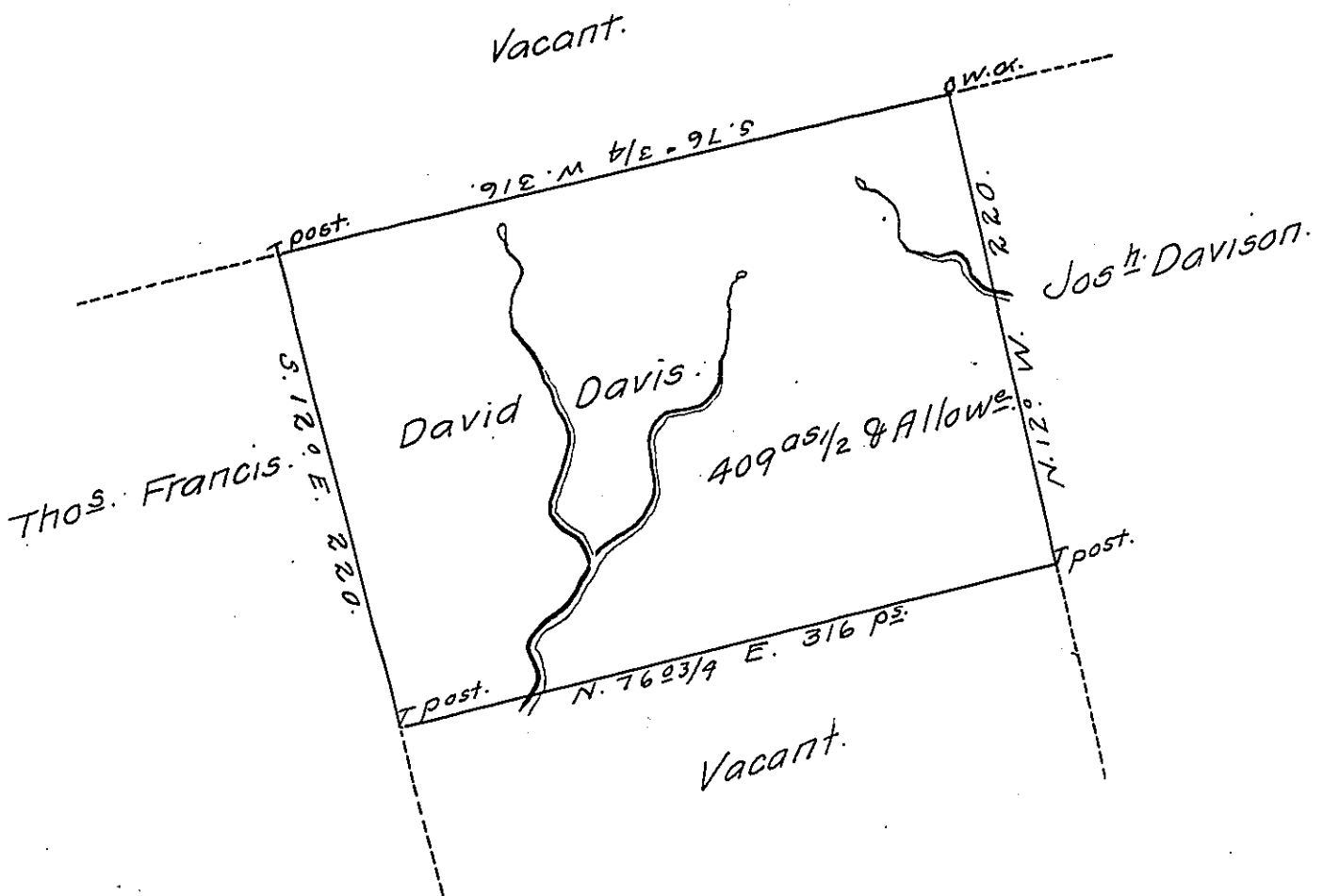


Sug. Loaf -  
Luzerne.



A draught of a tract of land called — situate on the water of the North Branch of Nescopeck Creek Near Land Survd. for Levy Fox & Joining Land Survd. for Jos. Davison. &c. In Luzerne (formerly Northumbd.) County. Containing four Hundred & Nine acres 1/2 & Allowance of six & Cent. for roads &c. Surveyed for David Davis the 13<sup>th</sup>. Day of April, 1787 in Pursuance of a Warrant Dated the 1st. Day of July, 1784.

To John Lukens, Esqr, } by  
 Survey Genl. } Wm. Gray, D.S.

IN TESTIMONY that the above is a copy of the original remaining on file in the Department of Internal Affairs of Pennsylvania, made conformably to an Act of Assembly approved the 16th day of February, 1833, I have hereunto set my Hand and caused the Seal of said Department to be affixed at Harrisburg, this twenty fourth day of July, 1911.

*Henry Houck*  
 Secretary of Internal Affairs.